

Welcome to High-Sync

ACTIVATION:

Please Email support@high-rely.com or Call (775) 329-5139 to talk to one of our Support Specialist in order to obtain an Activation License.

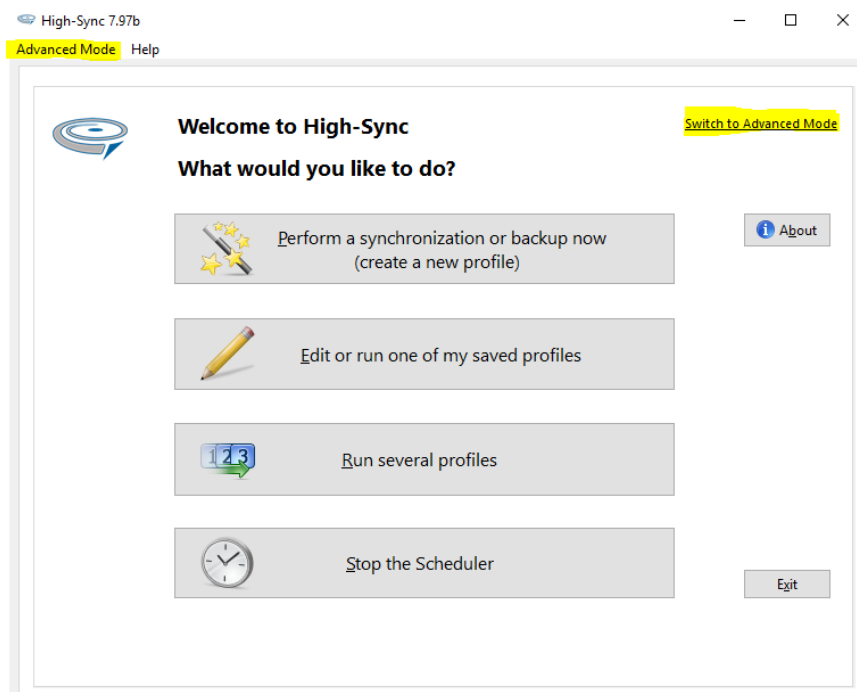
ABOUT:

High-Sync was designed to allow you to backup and synchronize your data automatically, with its built-in scheduler and jobs. High-Sync works with local hard drives, network drives, and any other mounted volumes. In addition, it comes with support for FTP, SSH, HTTP, WebDAV, Amazon S3, Google Drive, Microsoft Azure, SugarSync, box.net, and many other cloud storage providers. You can use both ZIP compression and data encryption. On Windows, the scheduler can run as a service – without users having to log on. There are powerful synchronization modes, including Standard Copying, Exact Mirror, and SmartTracking. Along with Block Level Copying, which saves bandwidth and space by only copying changed blocks on larger files.

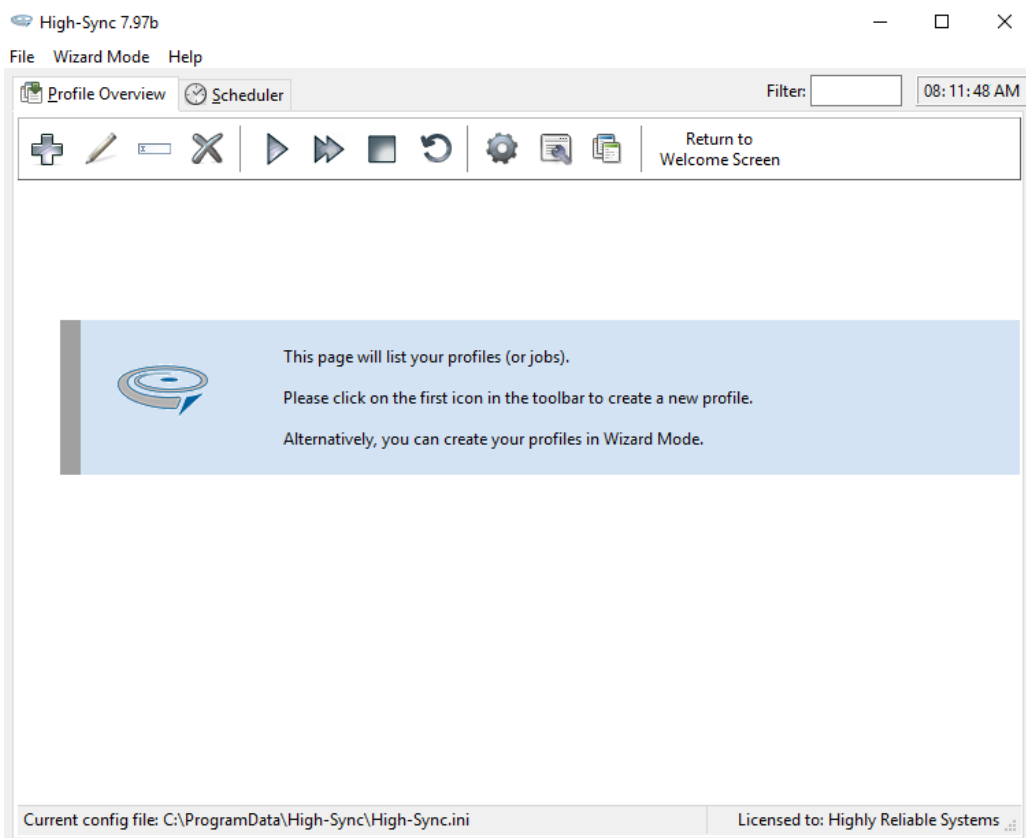
SETUP:

Profiles, which contain a Job or Task, can be created using either Wizard or Advanced Mode. We will be using Advanced Mode as it allows for more options and control over how our Jobs will run.

Upon starting High-Sync, you will be presented with the Welcome Splash Screen. In either the top right or top left of the window, click on Advanced Mode.



Once in Advanced mode, we can proceed with creating our first profile/job. Begin by clicking the plus icon on the toolbar.



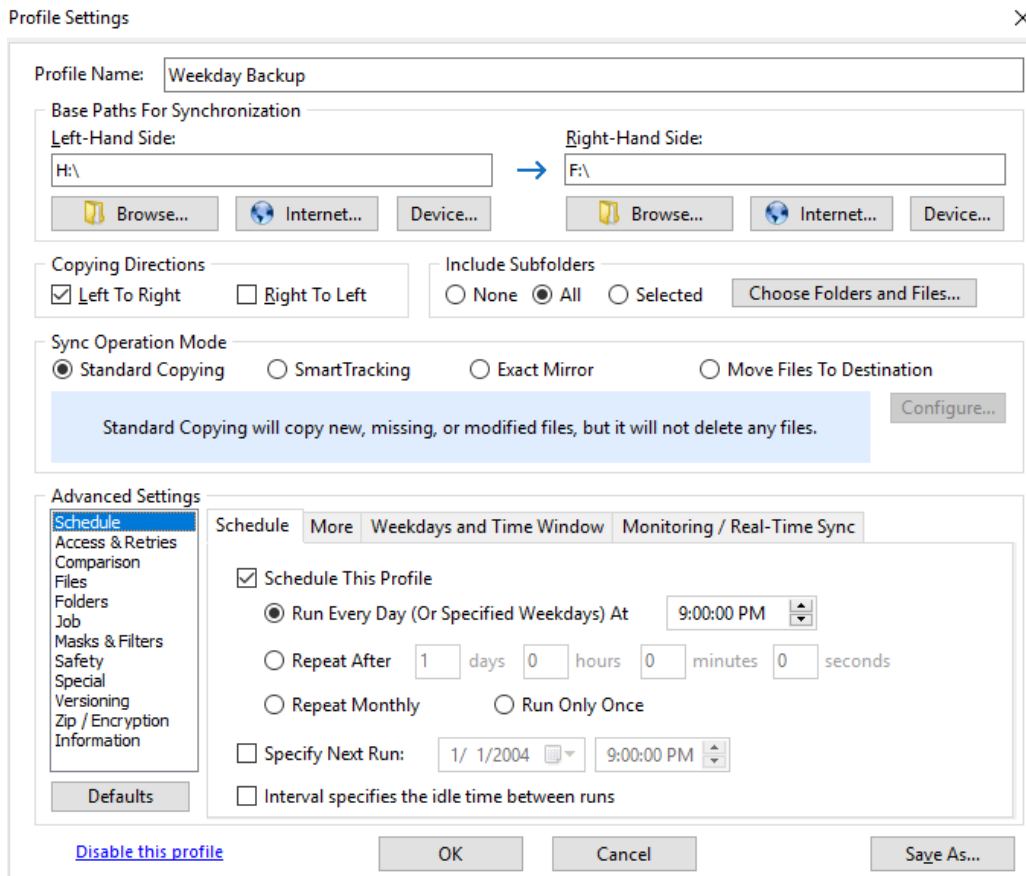
We will now be taken to the Profile Settings window. This is where we will create and set the options for our Job. Begin by giving the profile a name. In this example, we will go with Weekday Backup. Once the profile has been named, we will now choose Left and Right-Hand paths. For this example, we will be copying between two HDD's located on the same machine.

When selecting the paths, we are able to identify them by either Drive Letter or Volume Name. This allows for worry free copying when using swappable media that may change drive letters. For example, if your media is named Monday, then you would type Monday:\ instead of F:

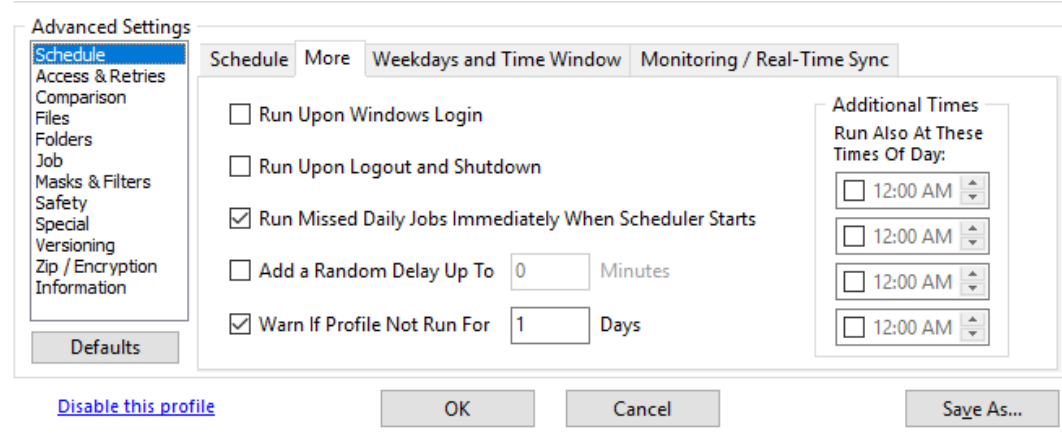
Now that we have selected our drives, we can move on to creating our Job and setting a schedule. For this example, we will be copying from our Left-Hand drive to our Right-Hand drive, using Standard Copying, and scheduling the Job to run Monday-Friday, after hours.

In Copying Directions, select the Left to Right checkbox. We will choose to include all Subfolders, and our Sync Operation Mode will be Standard Copying. Standard Copying will copy new, missing, or modified files, but will not delete any files.

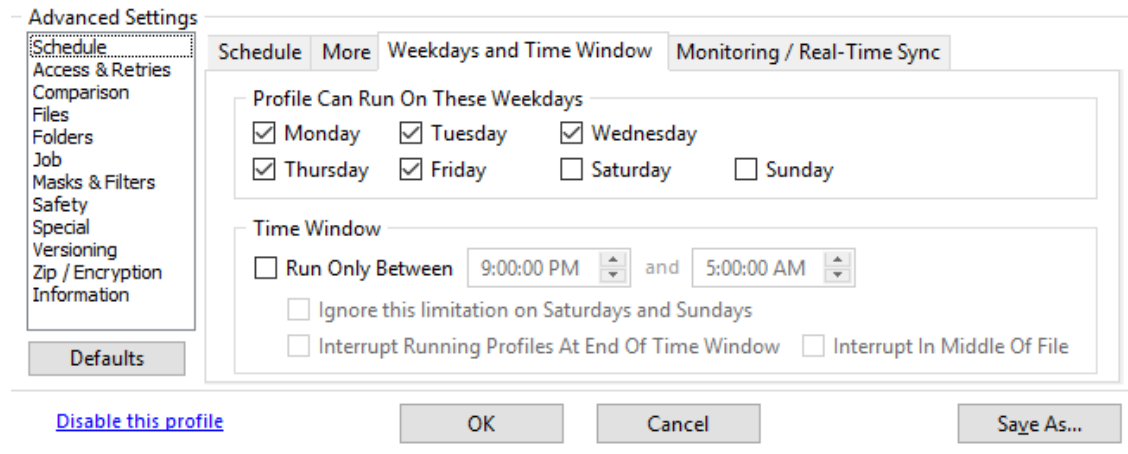
In Advance settings, we can choose the schedule for the Job, along with many other settings, that allow you to tweak the Job to fit your exact needs. We will choose to Schedule this profile to run on selected days at 9:00:00 PM.



Clicking on the More tab will allow us to select options to run the Job if missed, warn if the Profile is not run for a number of days, and also allows you the option to have the Job run more than once a day, at specified times.

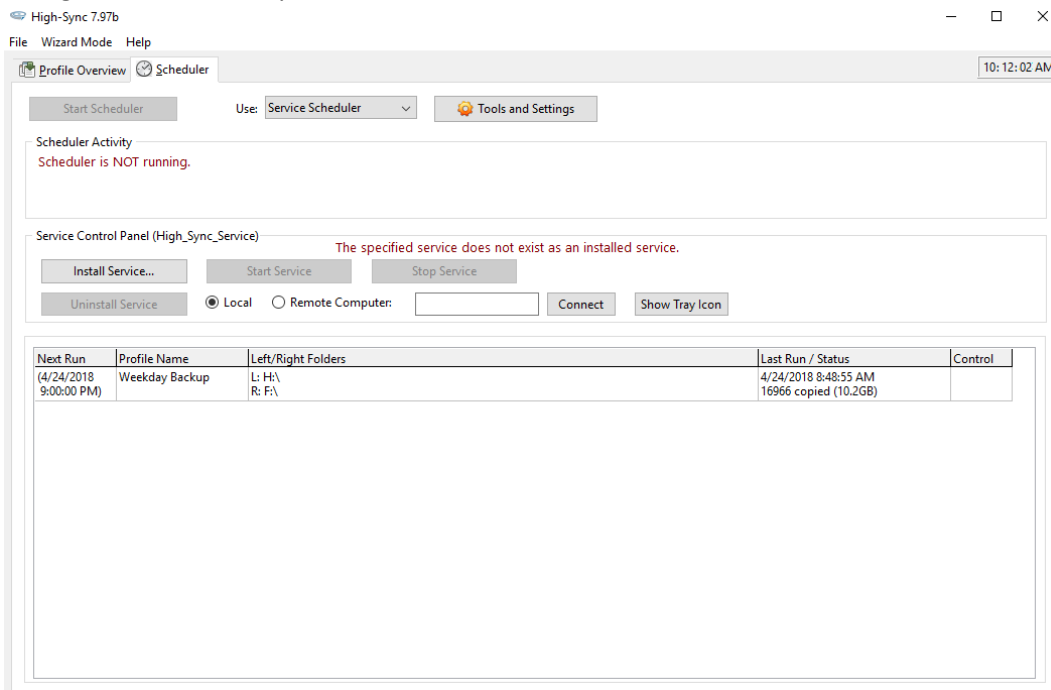


In the Weekdays and Time Window Tab, we will select what weekdays the Profile can run on. We have selected to only run the Profile Monday through Friday.



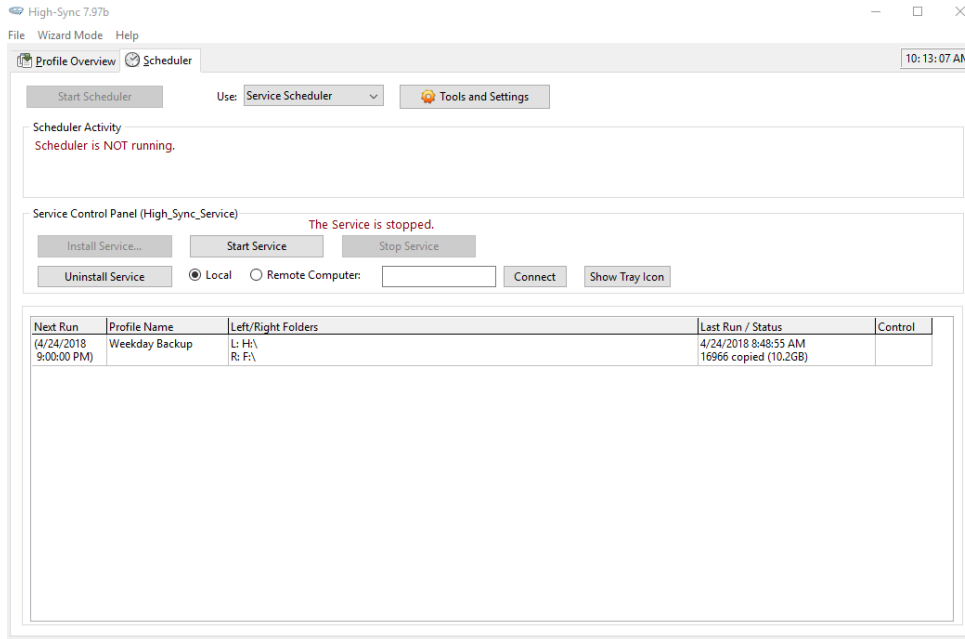
We are now able to save our Profile and continue on with the final steps.

We will now change from the Profile Overview tab to the Scheduler tab. If this is the first-time setup of High-Sync, we will need to install the High-Sync Service that will allow Profiles/Jobs to run in the background, with no input needed from the user.

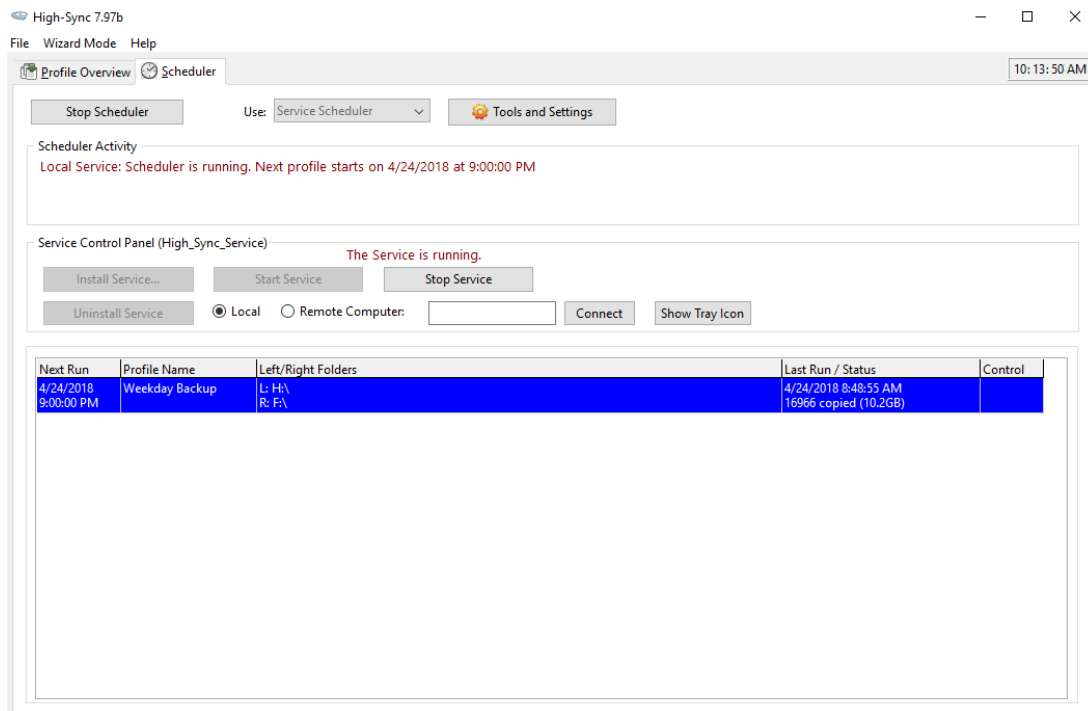


Begin by clicking on Install Service. This will ask for a User Account Name and Password. After this is given, the service will self-install.

Once the High-Sync Service is installed, we can now start the service. Select, Use: Service Scheduler from the top drop-down toolbar, and then select: Start Service, under the Service Control Panel header.



The Scheduler should now be running and you will see the next run time for the selected profile, under the Scheduler Activity header.



You have now successfully created and scheduled your first Job. For more information or Support, please contact our Technical support team, or visit our website at: <https://www.high-rely.com/support/>